



SCHAEFER SOUTH-EAST EUROPE SRL
Società del gruppo Schaefer-TEC
Cod.Fisc. e P.IVA: 03586750279
Sede Operativa: via Minzoni 57, 45100 Rovigo, Italia
Sede Legale: via Quirina 1313, 45031 Arquà Pol. (Rovigo),

Tel. : + 39 0425 460 218
Fax : + 39 0425 462 064
E-mail: italia@schaefer-tec.com
Web www.schaefer-tec.eu

PRO 30 MICRO ACOUSTIC ENCLOSURE : Technical Specification

pro 30 micro

S.N. P.....



Index

Dimensions and Technical Sheet
Description
Test Report
Labelling
Use and cautions
Mounting instructions

Attachments

Acoustic test report
Elements arrangement



SCHAEFER SOUTH-EAST EUROPE SRL
Società del gruppo Schaefer-TEC
Cod.Fisc. e P.IVA: 03586750279
Sede Operativa: via Minzoni 57, 45100 Rovigo, Italia
Sede Legale: via Quirina 1313, 45031 Arquà Pol. (Rovigo),

Tel. : + 39 0425 460 218
Fax : + 39 0425 462 064
E-mail: italia@schaefer-tec.com
Web www.schaefer-tec.eu

PRO 30 MICRO ACOUSTIC ENCLOSURE : Technical Specification

Max size : up to cm **311x311x218h**

Customized versions available (within the indicated max size)

STANDARD DIMENSIONS

PRO 30 micro Acoustic Enclosure

External dimension : mm 824 x 882 x 1208h

Internal dimension : mm 647 x 732 x 1051 h

Weight: Kg. 111 ca.

Technical sheet

External frame	Oxided aluminium, caulked with flame retardant material, Class I
External panel system	Flame retardant melaminic Class I reaction to fire - , the panel is side bordered with PVC, class I reaction to flame
Internal foam	Phonoabsorbing material with polyester expanded resin that present a uniform open cells structure, elastic, flame retardant according to Class II Reaction to flame in compliance with UL-94HFI - Working temperature range : - 50 + 110 °C .
Adhesive	Vinylic, Polyvinyl acetate
Profiles	Autoextinguishing PVC, flame retardant Class I
Iron fittings	Various iron components
Basement	Flame retardant chipboard, Class I , multilayer structure Technical carpeting , flame retardant Class I

PRO 30 MICRO ACOUSTIC ENCLOSURE : Technical Specification

Description

PRO 30 *MICRO* Acoustic Enclosure employs the same technology as the PRO 30 series. The caulked aluminium frame and the special "high thickness wire" panels technology allow an average dampening level of 32 dB.

The internal finishing is made by "open cells" autoextinguishing phonoabsorbing polyurethane foam with pyramidal design, gray anthracite colour.



Two *PRO 30 Micro* walls can be opened both towards left and right direction by means of fasteners that also act as handgrips.



One of the walls is provided with a box (at the right bottom) with a central passing hole for cables. It is extremely easy in mounting and has high dampening level once the cover is mounted



The "high specific weight" basement is made by a multilayer structure with different thickness and density, and rests on anti-vibrating adjustable feet. To allow a larger separation from the support plane, the basement is provided with a fiber mattress able to withstand the weight of the enclosure.

By raising the support feet by means of internal screws, it is even possible to obtain an elementary floating platform.



PRO 30 MICRO ACOUSTIC ENCLOSURE : Technical Specification

	RAPPORTO DI PROVA <i>(Test Report)</i>	Pag. 6
		di/of
N° 0038-B/DC/ACU/06	Date: 26/04/2006 <i>Date:</i>	pag. 8

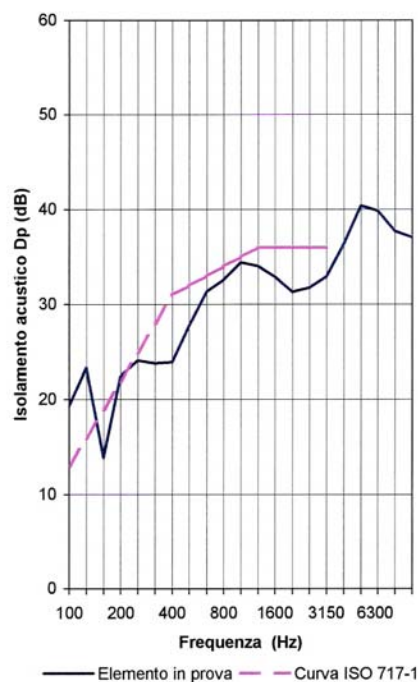
RISULTATI SPERIMENTALI

Isolamento acustico normalizzato D_p

Elemento in prova: **Cabina PRO 30**

Area della cabina S = 9 m²
 Volume della camera riverberante V = 190 m³
 Volume della cabina 2 m³

FREQ. Hz	L1 dB	L2 dB	Dp dB
100	77,3	57,9	19,4
125	78,9	55,5	23,4
160	78,2	64,3	13,9
200	78,9	56,4	22,5
250	82,1	58,0	24,1
315	83,7	59,9	23,8
400	81,5	57,5	23,9
500	83,0	55,2	27,8
630	85,3	53,9	31,4
800	84,4	51,8	32,6
1000	83,7	49,2	34,5
1250	82,2	48,1	34,1
1600	81,2	48,2	32,9
2000	81,1	49,8	31,3
2500	82,2	50,4	31,8
3150	81,2	48,3	32,9
4000	82,2	45,8	36,4
5000	82,5	42,1	40,4
6300	81,8	41,9	39,9
8000	82,4	44,7	37,7
10000	80,0	42,9	37,1



Valutazione secondo ISO 717-1 (nella banda 100 ÷ 3150 Hz) basata su misurazioni ottenute in laboratorio:

$D_{p,w} (C; C_{tr}) = 32 (-2 ; -5) \text{ dB}$



SCHAEFER SOUTH-EAST EUROPE SRL
 Società del gruppo Schaefer-TEC
 Cod.Fisc. e P.IVA: 03586750279
 Sede Operativa: via Minzoni 57, 45100 Rovigo, Italia
 Sede Legale: via Quirina 1313, 45031 Arquà Pol. (Rovigo),

Tel. : + 39 0425 460 218
 Fax : + 39 0425 462 064
 E-mail: italia@schaefer-tec.com
 Web www.schaefer-tec.eu

PRO 30 MICRO ACOUSTIC ENCLOSURE : Technical Specification

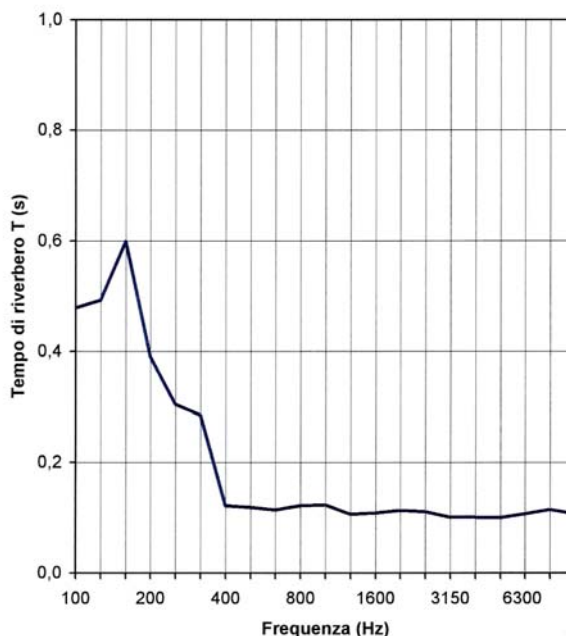
	RAPPORTO DI PROVA (Test Report)	Pag. 8
	N° 0038-B/DC/ACU/06	di/of pag. 8
		Date: 26/04/2006
		Date:

Tempo di riverbero all'interno della cabina

Elemento in prova: **Cabina PRO 30**

Volume della cabina: 2 m³

FREQ. Hz	T sec
100	0,48
125	0,49
160	0,60
200	0,39
250	0,31
315	0,29
400	0,12
500	0,12
630	0,12
800	0,12
1000	0,12
1250	0,11
1600	0,11
2000	0,11
2500	0,11
3150	0,10
4000	0,10
5000	0,10
6300	0,11
8000	0,12
10000	0,11



IL RESP. DELLA
DIVISIONE COSTRUZIONI

Division Head
Ing. P. Mele

IL RESP. DEL CENTRO

Managing Director
Ing. P. Cau

Mod. 7172 - Rev. 6



1



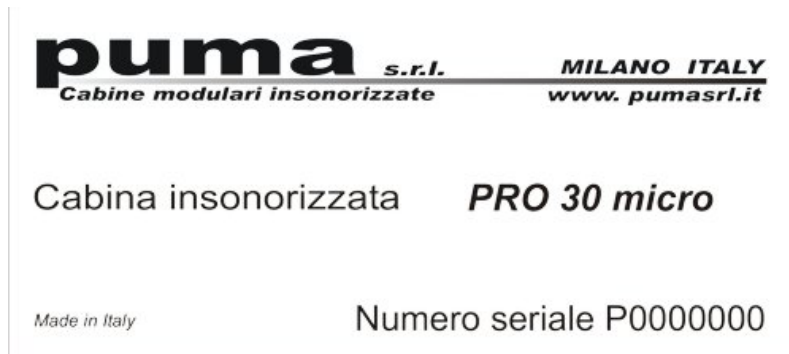
SCHAEFER SOUTH-EAST EUROPE SRL
Società del gruppo Schaefer-TEC
Cod.Fisc. e P.IVA: 03586750279
Sede Operativa: via Minzoni 57, 45100 Rovigo, Italia
Sede Legale: via Quirina 1313, 45031 Arquà Pol. (Rovigo),

Tel. : + 39 0425 460 218
Fax : + 39 0425 462 064
E-mail: italia@schaefer-tec.com
Web www.schaefer-tec.eu

PRO 30 MICRO ACOUSTIC ENCLOSURE : Technical Specification

Labelling

Serial numbers of the Acoustic Enclosure are indicated on a label placed on the roof panel.



Standard references

UNI EN ISO 717-1 "evaluation of acoustic isolation in buildings and of elements in building
"acoustic isolation from the aerial propagation"

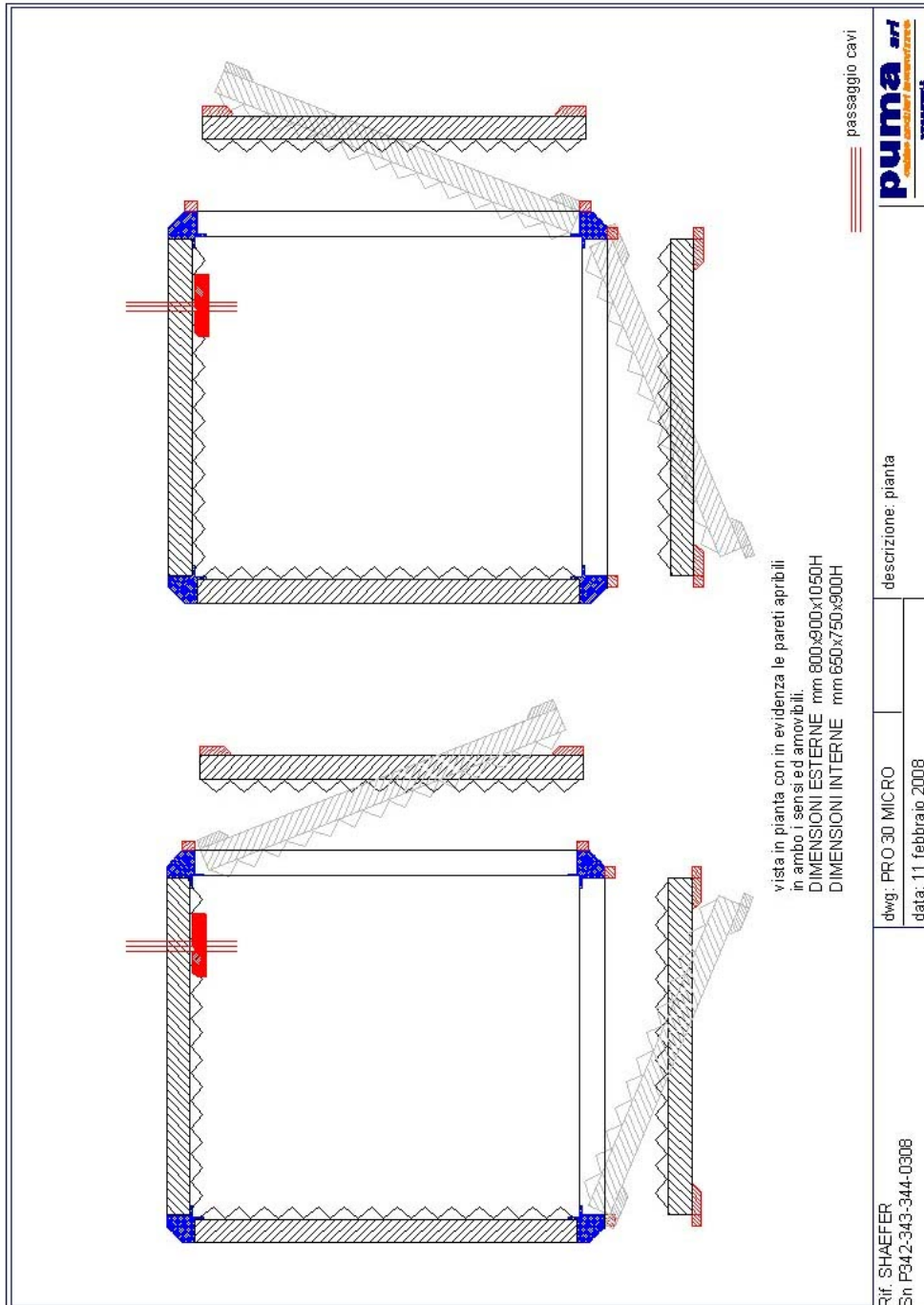
Use and caution

Installation of the acoustic enclosure in an unsuitable environment where inflammable materials are present decline any Schaefer /Puma responsibility for damages provoked.

SCHAEFER/PUMA decline every responsibilities for a damage derived by a bad use, wrong mounting done by not authorized people, bad environment conditions, and by a non proper use of the apparatus.

PRO 30 MICRO ACOUSTIC ENCLOSURE : Technical Specification

Mounting scheme





SCHAEFER SOUTH-EAST EUROPE SRL
Società del gruppo Schaefer-TEC
Cod.Fisc. e P.IVA: 03586750279
Sede Operativa: via Minzoni 57, 45100 Rovigo, Italia
Sede Legale: via Quirina 1313, 45031 Arquà Pol. (Rovigo),

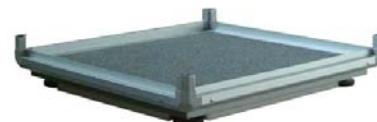
Tel. : + 39 0425 460 218
Fax : + 39 0425 462 064
E-mail: italia@schaefer-tec.com
Web www.schaefer-tec.eu

PRO 30 MICRO ACOUSTIC ENCLOSURE : Technical Specification

IMPORTANT : Read carefully all the instructions before proceeding to the mounting

Basement

Bring to 0 the adjustable feet, by screwing them counterclockwise from the inside with the key allen



Vertical Elements



Insert the aluminium vertical elements in the 4 angles following the drawing in the mounting scheme (blue color)

Ceiling Panel



Insert the 4 angles of the ceiling panels in the respective vertical elements

Frame

Once the frame is mounted, tighten the screws





SCHAEFER SOUTH-EAST EUROPE SRL
Società del gruppo Schaefer-TEC
Cod.Fisc. e P.IVA: 03586750279
Sede Operativa: via Minzoni 57, 45100 Rovigo, Italia
Sede Legale: via Quirina 1313, 45031 Arquà Pol. (Rovigo),

Tel. : + 39 0425 460 218
Fax : + 39 0425 462 064
E-mail: italia@schaefer-tec.com
Web www.schaefer-tec.eu

PRO 30 MICRO ACOUSTIC ENCLOSURE : Technical Specification

Walls



Insert the walls, then tighten with the supplied screws



The 2 front panels must be simply mounted in their place before locking with the fasteners



SCHAEFER SOUTH-EAST EUROPE SRL
Società del gruppo Schaefer-TEC
Cod.Fisc. e P.IVA: 03586750279
Sede Operativa: via Minzoni 57, 45100 Rovigo, Italia
Sede Legale: via Quirina 1313, 45031 Arquà Pol. (Rovigo),

Tel. : + 39 0425 460 218
Fax : + 39 0425 462 064
E-mail: italia@schaefer-tec.com
Web www.schaefer-tec.eu

PRO 30 MICRO ACOUSTIC ENCLOSURE : Technical Specification

Fasteners

Pro 30 Micro fasteners type allows the mounting without using tools.



Bring the panel close to the vertical element hinge with the fastener lever in raised position, as shown in the picture on the left

Insert and lock by pressing the lever until the fastener is closed



For a safety fixing, fasteners levers can be also locked with the allen wrench .

Depending on customer needs the front panels can be indifferently open right and left simply acting on the fasteners.



Feet adjustment



SCHAEFER SOUTH-EAST EUROPE SRL
Società del gruppo Schaefer-TEC
Cod.Fisc. e P.IVA: 03586750279
Sede Operativa: via Minzoni 57, 45100 Rovigo, Italia
Sede Legale: via Quirina 1313, 45031 Arquà Pol. (Rovigo),

Tel. : + 39 0425 460 218
Fax : + 39 0425 462 064
E-mail: italia@schaefer-tec.com
Web www.schaefer-tec.eu

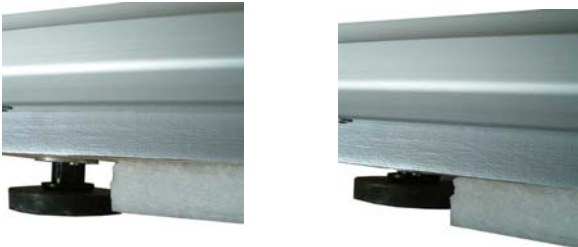
PRO 30 MICRO ACOUSTIC ENCLOSURE : Technical Specification

Once the acoustic enclosure is mounted , you can adjust the feet with the key allen to correct the levelling.



Feet floating adjustment

When the acoustic enclosure is placed on a good levelled surface, it is possible not to use the feet , but simply rest the cabin on the fiber panel under the basement. This way allows to obtain an elementary floating platform, with a further vibration dampening due to the weight of the cabin and the instrument inside.



Passing hole for cables

It is located on the right bottom of the back panel ; use the key allen provided to remove the box cover, pass through all the cables, then close again the cover.





SCHAEFER SOUTH-EAST EUROPE SRL
Società del gruppo Schaefer-TEC
Cod.Fisc. e P.IVA: 03586750279
Sede Operativa: via Minzoni 57, 45100 Rovigo, Italia
Sede Legale: via Quirina 1313, 45031 Arquà Pol. (Rovigo),

Tel. : + 39 0425 460 218
Fax : + 39 0425 462 064
E-mail: italia@schaefer-tec.com
Web www.schaefer-tec.eu

PRO 30 MICRO ACOUSTIC ENCLOSURE : Technical Specification

Maintenance and cleaning

Maintenance:

A specific maintenance is not needed.

Cleaning :

Use standard furnitures polish for panels and frame cleaning.
Use recommended natural products for basement carpeting cleaning.