

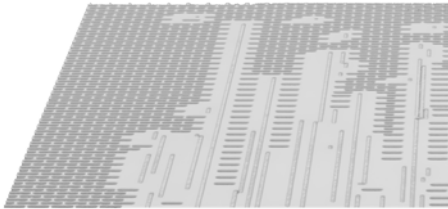


**smartWLI**  
technology

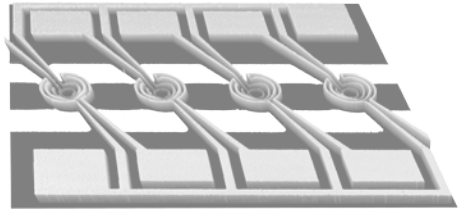
- sub nanometre height resolution on large areas
- high speed with parallel image processing
- scanning of shine and transparent surfaces possible
- optimized algorithms for steep flanks



Seat – 10mm<sup>2</sup>



Chip – 0.01 mm<sup>2</sup>



Sensors – 1 mm<sup>2</sup>

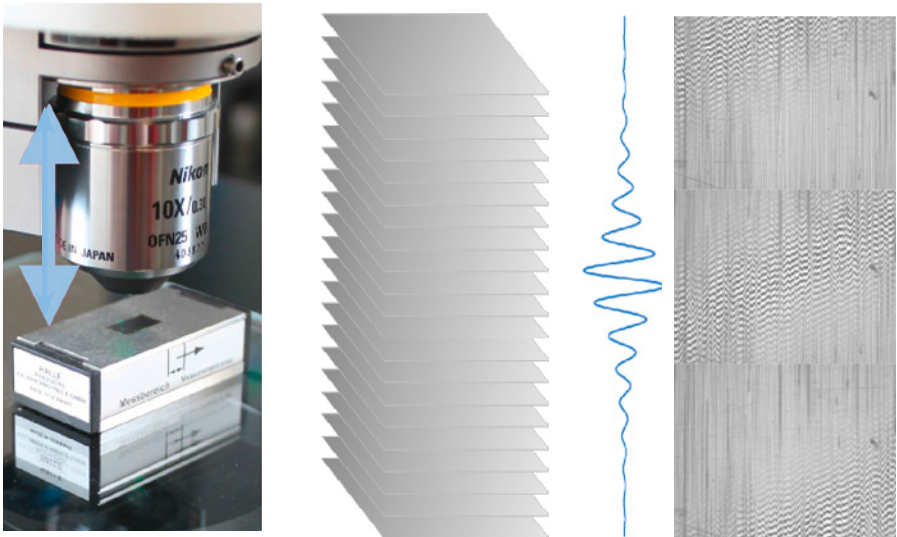


Horizontal Milling – 100mm<sup>2</sup>

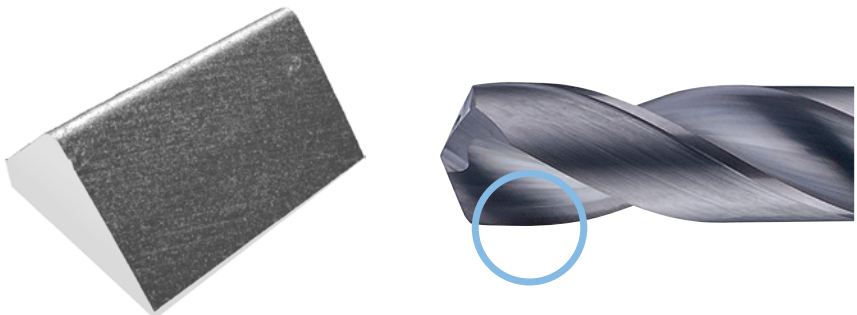
Surface Structures • Micro Geometries • Flatness Measurement • Precisions and Micro Parts  
Tools and Abrasives • Hardness Indentations • Wear and Corrosion • Forensics • Display Inspection  
Optical Components • Coatings • Semiconductors / Wafers • Cylinder Inspection • Printing Cylinders

## smart White Light Interferometry

- The objective is moved in z - axis using a piezo positioning system
- Interferences can be found on any surface including shine and transparent ones
- The interference effect provides sub nanometre resolution
- The location of the correlogram including several interferences determines the absolute distance from the objective



- The GBS's Speedytec technology uses the power of massive parallel image processing in FPGA's and GPU's providing real time 3D calculation with extreme speed.

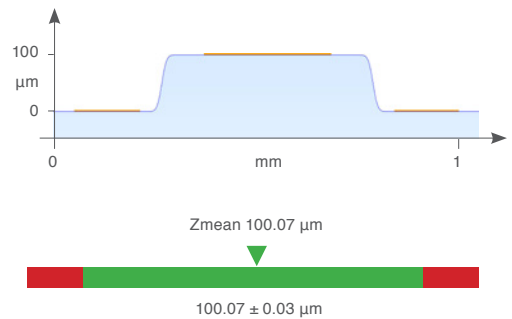
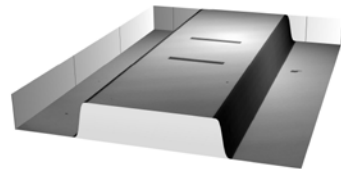
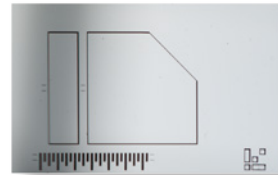
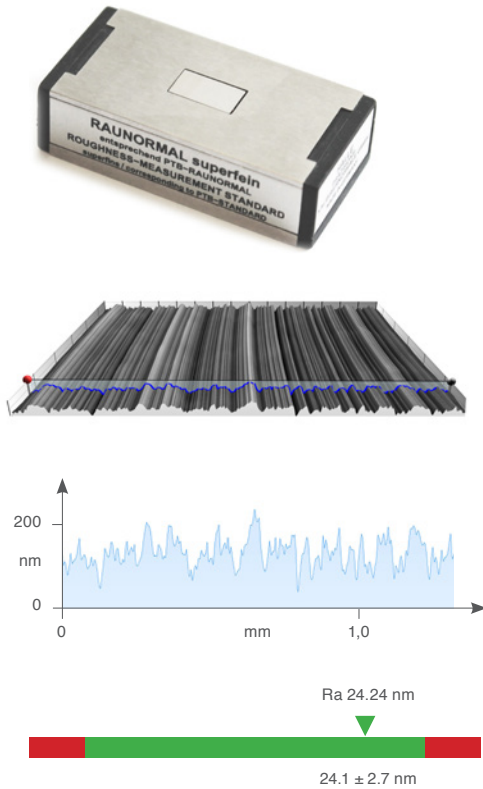


**Optimized to generate best results on steep geometries.**

# Extreme resolution and proven accuracy

## superfine roughness standard

## calibrated step standard



0,14 nm  
diameter  
Fe - Atom



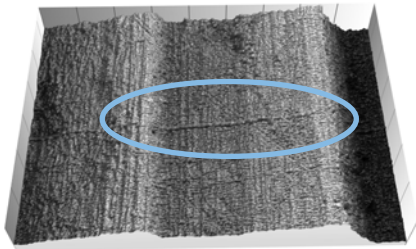
0,1 nm  
standard deviation Ra  
25 repetitions

## Stronghold of smartWLI's:

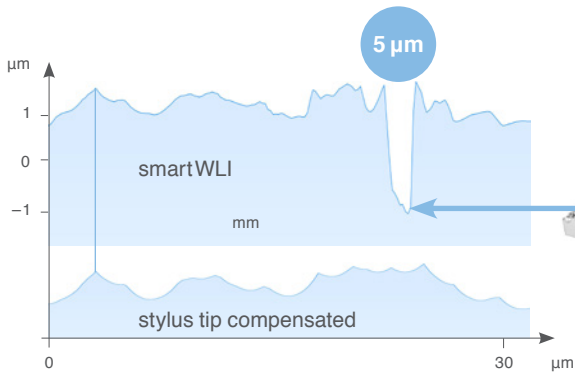
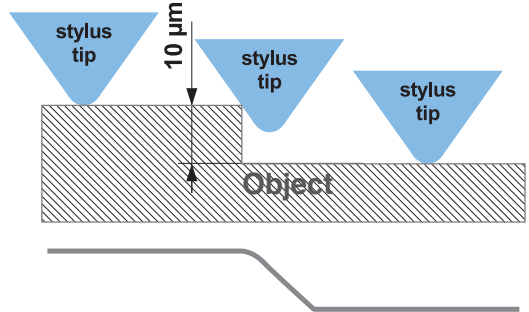
- The superior height resolution is independent from the field of view
- Many objects can be measured without stitching
- This can save time and the money for automated xy tables

# Measurement of surface roughness

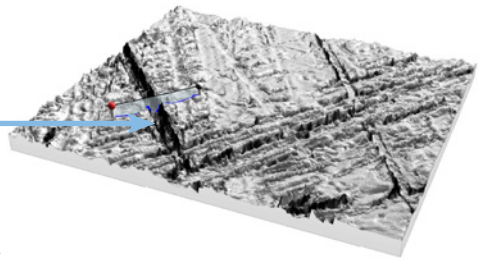
Stylus tip scratches



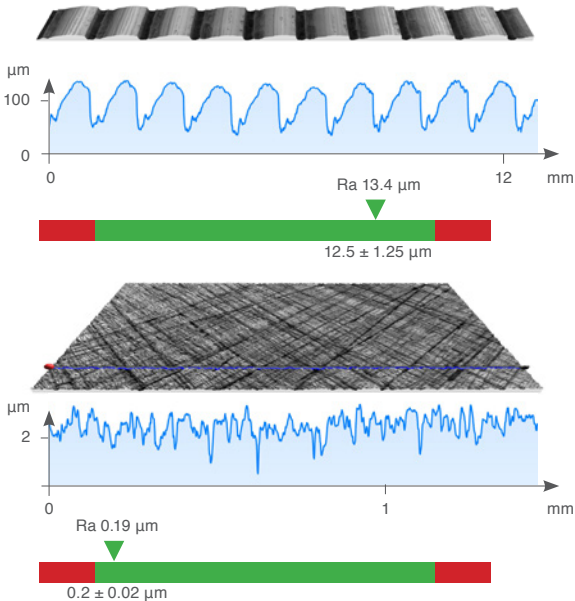
Stylus tip limitation



tactile measured profile



## Reproduction of certified stylus measuring results



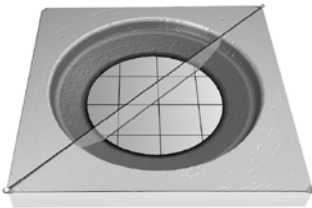
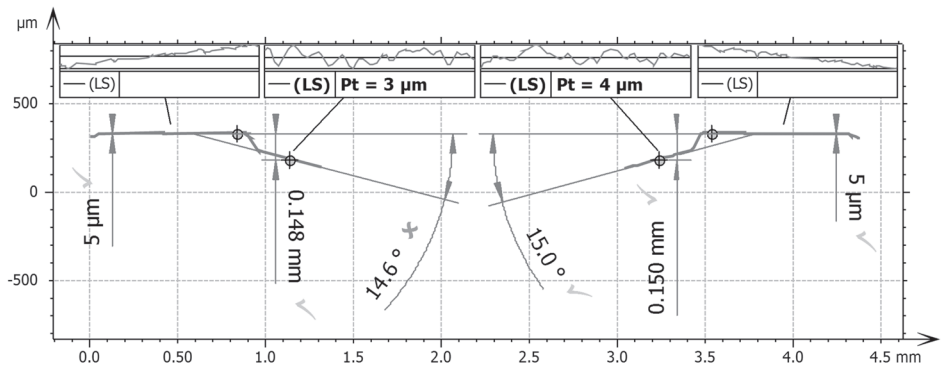
	63	32	16	8	4	2
μm Ra	1.6	0.8	0.4	0.2	0.1	0.05
FLAT LAPPING						
GRINDING						
FLEXBAR	N1	N6	N5	N4	N3	N2
NO 15008	AAA	AAA	AAA	AAA	AAA	AAA
	N10	N9	N8	N7	N6	N5
HORIZONTAL MILLING						
VERTICAL MILLING						
TURNING						
μm Ra	12.5	6.3	3.2	1.6	0.8	0.4
μm AA	500	250	125	63	32	16

## Smart VIS3D - the scanning software

- Speedytec - parallel image processing in real time
- Piezo - control of the scanning and synchronized image acquisition
- XY tables - positioning and automated stitching
- Algorithms - vertical scanning, phase shift, fast scan
- User interface - push button scan, macro selector, visualization and data export, live image, light control, scanning preview

## MountainsMap® – package for universal 3D data analysis

- 3D tools - step height, flatness, parallelism, structure analysis, surface roughness parameters, Fourier analysis...
- Profile tools - step height, distances, angle, radii, surface roughness parameter...
- Contour analysis - geometrical fits, comparison against ideal geometry, angle, radii, distances, centricity...



## Customization

- Plug ins for MountainsMap®
- System and software development for complete automated measuring stations





## Interferometer

smartWLI prime  
smartWLI extended  
smartWLI embedded  
smartWLI Cylinderinspector 3D

## Accessories

interferometric objectives  
stand alone stands  
mobile stands  
automated stitching tables  
calibration standards  
evaluation software

## Integrators

FPGA powered smartWLI sensors  
upgrade kits for microscopes

## Services

high res scans as service  
consulting for smartWLI  
technology  
customized automated  
measuring systems



## Gesellschaft für Bild- und Signalverarbeitung (GBS) mbH

Werner-von-Siemens-Str. 10 • D-98693 Ilmenau

Tel.: +49 3677 623618 • Fax: +49 3677 6897682

E-Mail: [info@gbs-ilmenau.de](mailto:info@gbs-ilmenau.de) • [www.gbs-ilmenau.de](http://www.gbs-ilmenau.de)